

SONY®



At home in the field or in the studio.
The NIPROS™ Studio Configuration Kit from Nippon Video System Co. Ltd.



HDNA
High Definition. It's in our DNA.



Realize your full HD potential.

Sony is the leading name in professional HD cameras. Whether you are shooting with a single rig out in the field or in a sophisticated studio environment, Sony cameras set the standard for image quality, digital workflow and consistent performance.

For production and broadcast organizations seeking affordable HD production solutions, Sony XDCAM EX™ and hybrid HDV™ camcorders offer professional HD capabilities at a fraction of the cost of competing camera systems.

Thanks to Sony, HD production is a reality for businesses and organizations of every size, including but not limited to:

- Public access channels
- Cable broadcasters
- Educational institutions
- Independent filmmakers
- Corporate events and training facilities
- Houses of worship
- Federal and State Government agencies

Now Sony is helping modest, budget-conscious productions take HD technology to the next level by identifying cost-effective solutions from providers that seamlessly integrate our powerful, flexible cameras into multi-camera studio environments.



Optimal HD Performance. Optimal Return on Investment.

Introducing PMW-EX3 and Hybrid HDV Camcorders with the NIPROS/1 Studio Configuration Kit from Nippon Video System Co. Ltd.

According to Nippon Video System Co. Ltd., the NIPROS™/1 Studio Configuration Kit adapts certain XDCAM EX and hybrid HDV camcorders for use in studio operations and multi-camera production environments. For example, with the native 1920x1080 HD resolution and interchangeable lens systems, the PMW-EX3 camcorders have more than enough raw horsepower for studio work. The NIPROS/1 Studio Configuration Kit helps you harness its full potential and expand your capabilities, while remaining budget-conscious on the operation of the studio.

The comprehensive tools you need in one affordable package.

Nippon Video System Co. Ltd. says it developed the NIPROS/1 kit to provide production engineers and camera operators with the tools they need to design and execute multi-camera productions including genlock, time-code in/out, return video, tally, and intercom communication via SMPTE fiber optic cable. And for color matching and adjustments on certain parameters across multiple PMW-EX3 camcorders configured with the NIPROS/1 kit, you can use either the RM-B750 or the RM-B150 remote controllers.





Packaged for ultimate studio performance.

The NIPROS/1 Studio Configuration Kit includes a PS-570 camera control unit, a PS-270 camera adapter, a 4.3* inch color LCD wide-screen return video monitor, two intercom headsets and all necessary interface cables.

- PS-270 Camera Adapter
- PS-570 Camera Control Unit
- LVM-43W 4.3* inch HD monitor
- Intercom headsets x 2
- Short HDSDI cable (between PMW-EX3 and PS-270)
- Short 8 pin cable (between PMW-EX3 and remote controller)
- Short LANC cable (used when configuring hybrid HDV camcorders instead of PMW-EX3)
- Power supply for the PS-570 Camera Control Unit



Additional components for the system must be purchased separately.

- SMPTE fiber cable (various lengths available from Mohawk, www.mohawk-cable.com)
- RM-B150 or RM-B750 remote controller
- VCT-14 tripod adapter

Possible upgrade option for 7* inch LCD

According to NEBTEK (www.nebtek.com), they now offer an exceptional 7* inch HD monitor that can be integrated with the PMW-EX3 or hybrid HDV camcorder to provide a larger return video display when these camcorders are integrated with the NIPROS/1 kit. It can be powered either by camera battery or via the 4-pin XLR of the Camera Adapter PS-270 included in the NIPROS/1 kit. Model NEB70HDS-EX is for the PMW-EX3 camcorder. Please contact NEBTEK for further details.

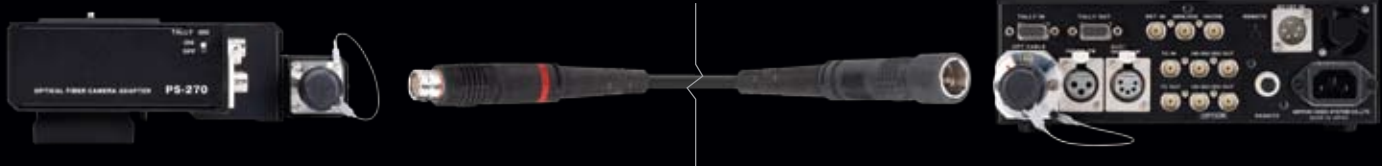


Seamless integration.

Nippon Video System Co. Ltd. feels that the NIPROS/1 kit provides the SMPTE fiber optic interface, camera controls and all necessary inputs and outputs needed to network your camera into a professional studio infrastructure.

Nippon Video System Co. Ltd. says that it has made the integration simple and efficient by requiring only one SMPTE fiber optic cable between the PS-270 Camera Adapter and the PS-570 Camera Control Unit. It eliminates the problems and additional crew that come with running multiple cables to each camera setup. Depending on your production requirements, the SMPTE fiber optic cable can be extended up to 1.2 miles.

SMPTE fiber optic cable
Max 1.2 miles



NIPROS PS-270 Camera Adapter

- HD/SD SDI input from camera
- Return video output to camera
- Genlock output to camera
- 8-pin remote for camera remote control
- LANC jack for hybrid HDV camcorders
- 4-pin XLR intercom headset jacks (x2)
- 12 V DC output
- Front & rear tally indicators
- SMPTE fiber optic cable connector

NIPROS PS-570 Camera Control Unit

- HD/SD SDI output (x2) / auto detecting (SD/HD)
- Intercom headset jack
- Intercom system jacks for support of both 2-wire and 4-wire intercom systems
- 8-pin remote connector for interfacing to Sony RMB-150 or RMB-750 camera remote controllers
- LANC jack for hybrid HDV camcorders
- Return video input to interface to video switcher program output
- Genlock input (can be used to supply teleprompter composite video signal to camera instead)
- DC in via 4-pin XLR for remote location operation
- AC power line cord jack
- Tally in & out connectors
- SMPTE fiber optic cable connector

*Viewable area, measured diagonally

NIPROS/1 for Hybrid HDV Camcorders



Side, rear and front views of the HVR-Z5U camcorder with PS-270 camera adapter (included in NIPROS/1)

Nippon Video System Co. Ltd. also says the NIPROS/1 Studio Configuration Kit adapts the following Sony hybrid HDV camcorders for the studio production environment. There are two types of Sony remote controllers, depending on the HDV model.

Camera Model	Recommended remote controller
HVR-A1U	RM-1BP
HVR-Z1U	RM-1BP
HVR-V1U	RM-1BP
HVR-Z5U	RM-1000BP
HVR-Z7U	RM-1000BP*

* Some HVR-Z7U and HVR-S270U may require firmware upgrade for it to work with RM-1000BP. Please contact your nearest Sony Service Center for details.

Controllable Features	RM-1BP	RM-1000BP
Zoom	Yes	Yes
Rec Start/Stop	Yes	Yes
Focus	Yes	Yes
Iris	No	Yes
Push Auto Iris	No	Yes
Push Auto Focus	No	Yes
Assign Key recall	No	Yes
White Balance A/B	No	Yes
Gain	No	Yes
Picture Profile	No	Yes
Shutter Speed	No	Yes
Menu	No	Yes
Hold	No	Yes

Nippon Video System Co. Ltd. explains that while the NIPROS/1 kit set up with the HDV camcorder is almost identical to that using the PMW-EX3 camcorder, it requires the use of a third-party HD analog component / HDSDI converter to output embedded timecode and audio to the PS-570 camera control unit via the SMPTE fiber optic cable.

NIPROS/1 for the PMW-EX3 XDCAM EX Camcorder

According to Nippon Video System Co. Ltd., the NIPROS/1 kit makes the Sony PMW-EX3 a full HD XDCAM EX camcorder at home in the field or in the studio. The PMW-EX3 camcorder provides full raster 1920x1080 resolution, interchangeable lens capability and file-based recording in multiple formats including 1080P, 1080i and 720P.

The PMW-EX3 camcorder and NIPROS/1 kit are available from Sony as a combination package – PMWEX3NPAC – providing a comprehensive studio solution for small to mid-sized production facilities.

For broadcast quality remote control capability, Sony recommends adding an RM-B150 or RM-B750 remote controller to your NIPROS/1 configuration.





NIPROS/2 for Shoulder Mount Camcorder

Nippon Video System Co. Ltd. says it also has developed the NIPROS/2 Studio Configuration Kit to adapt the HVR-S270U shoulder mount HDV camcorder to the studio production environment by utilizing the rear-attached NIPROS PS-470L camera adapter. Nippon Video System Co. Ltd. designed the system functionality of PS-470L very similar to the PS-270 bottom mount camera adapter included in the NIPROS/1 kit.

The recommended remote controller for the HVR-S270U with NIPROS/2 kit is RM-1000BP.



The rear-attached NIPROS PS-470L camera adapter easily converts the HVR-S270U shoulder mount HDV camcorder for studio applications.



Broadcast quality remote controllers

Either RM-B150 or RM-B750 can be used as the remote controller for PMWEX3NPAC

Function	Operation on the PMW-EX3 camcorder	Operation on the RM-B150	Operation on the RM-B750
Menu ON/OFF	MENU button	Yes	Yes
Master gain selection	GAIN switch	Yes	
Gain adjustment	CAMERA SET menu → gain setup	Yes	
Step gain selection			Yes
Color bar signal output ON/OFF	CAM/BAR button	Yes	Yes
Shutter ON/OFF	SHUTTER switch + CAMERA SET menu → shutter	Yes	Yes
Shutter speed selection	CAMERA SET menu → shutter	Yes	Yes
ECS ON/OFF	SHUTTER switch + CAMERA SET menu → shutter	Yes	Yes
ECS frequency selection	CAMERA SET menu → shutter	Yes	Yes
Auto white balance	AUTO W BAL button	Yes	Yes
Auto black balance	CAMERA SET menu → Auto BLK balance	Yes	Yes
White R/B level adjustments		Yes	Yes
Black R/B level adjustments		Yes	Yes
White balance memory selection	WHITE BAL switch	Yes	Yes
Auto tracing white ON/OFF	Assignable button (with "ATW" assigned)	Yes	Yes
Recording start/stop	REC START/STOP button	Yes	Yes
Rec review	REC REVIEW button	Yes	Yes
Rec review stop	STOP button	Yes	Yes
Call signal ON/OFF			Yes
Picture Profile item			
Matrix	Setting		Yes
	Level		Yes
Detail	R-G, R-B, G-R, G-B, B-R, B-G		Yes
	Setting		Yes
	Level	Yes	Yes
	Frequency		Yes
	Crispensing		Yes
	H/V Ratio		Yes
	White Limiter		Yes
	Black Limiter		Yes
	Knee APT Level		Yes
Skin Tone Detail	Setting	Yes	Yes
	Level	Yes	Yes
	Area Indication		Yes
	Saturation		Yes
	Phase		Yes
	Width		Yes
Knee	Setting		Yes
	Auto Knee	Yes	Yes
	Point	Yes	Yes
	Slope	Yes	Yes
	Knee SAT Level	Yes	Yes
Gamma	Level	Yes	Yes
	Select		Yes
Black		Yes	Yes
Black Gamma			Yes
Low Key SAT			Yes

PMW-EX3N PAC System Configuration Guide

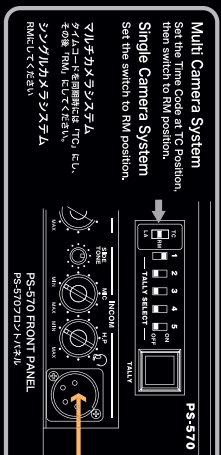
Wiring

Supplied accessories	Option
COMPACT MONITOR LVM-43Wx1	HEAD SET FL-401
UNIVERSAL HEADx1	DC CABLE DC-EX3x1
VF8PIN CABLE VC-450x1	D-SUB15PIN-D-SUB15PINx1
REMOTE CABLE RCC-450x1	CONTROL L CABLEx1
BNC CABLE 38cmx3	AC CABLEx1
BNC CABLE 1mx1	
BNC CABLE DC-EX3x1	
D-SUB15PIN-D-SUB15PINx1	
CONTROL L CABLEx1	
AC CABLEx1	

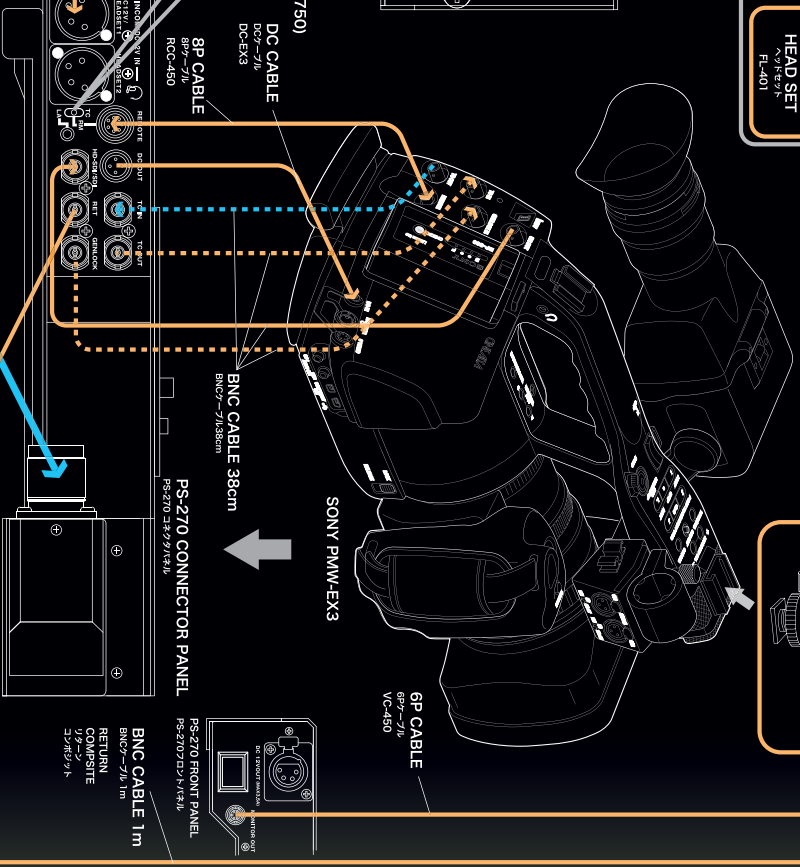
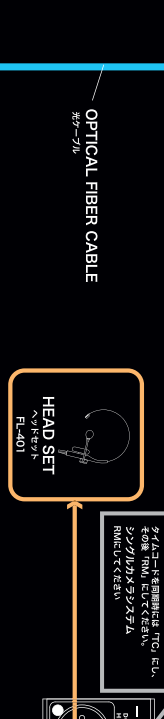
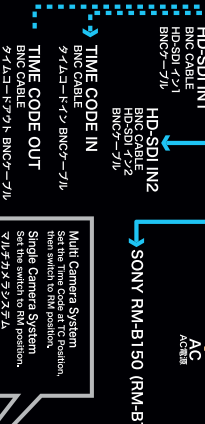
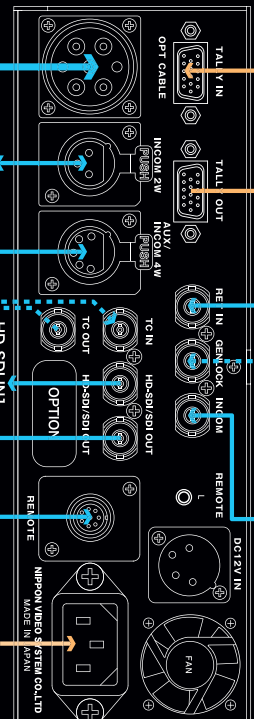
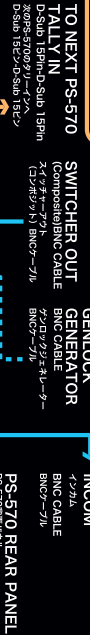
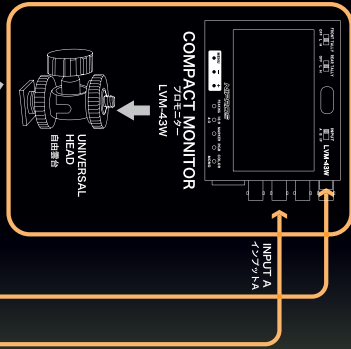
SWITCHER TALLY OUT

D-Sub 15P - Cut
2x12ピンケーブルのD-Sub 15P端子を切断し、両端を絶縁処理してください。

No.	Signal	Color
1	TALLY 1	BLACK 黒
2	TALLY 2	BROWN 茶
3	TALLY 3	RED 赤
4	TALLY 4	ORANGE 橙
5	TALLY 5	YELLOW 黄
10	COM(IGND)	WHITE 白



- ### Supplied Accessory
- 付属品
- COMPACT MONITOR LVM-43Wx1
 - UNIVERSAL HEADx1
 - HEAD SET FL-401x2
 - VF8PIN CABLE VC-450x1
 - REMOTE CABLE RCC-450x1
 - BNC CABLE 38cmx3
 - BNC CABLE 1mx1
 - BNC CABLE DC-EX3x1
 - D-SUB15PIN-D-SUB15PINx1
 - CONTROL L CABLEx1
 - AC CABLEx1



Enhance your flexibility in the studio and in the field.

Sony is constantly looking to identify tools from respected third parties that help you extend the capabilities of your Sony camera into applications that were not necessarily possible when you first made the investment.

For more information on the NIPROS Studio Configuration Kit with XDCAM EX and HDV camcorders:

 [click: sony.com/xdcamex](http://sony.com/xdcamex)  [click: sony.com/hdv](http://sony.com/hdv)

Additional accessories from third party companies.



Rear Lens Controls

Rear lens control accessories give camera operators the precision they need in the studio when working with different lenses on the XDCAM EX and HDV hybrid camcorders. Fujinon (www.fujinon.com) and Canon (www.canon.com) provide a full range of rear lens controls for use with their lenses.

SYSTEM	XDCAM EX	HDV
Model	PMW-EX3	HVR-S270U / Z7U
Lens Mount	1/2 inch EX Mount	1/3 inch bayonet
for 2/3 inch bayonet lens	Fujinon ACM-21, Canon LCV-41E	Fujinon ACM-17, Canon LCV-42T
for 1/2 inch bayonet lens	ACM-18 (supplied accessory for PMW-EX3), Canon LCV-20E	Fujinon ACM-19
for 1/3 inch bayonet lens	N / A	Direct Mount




Zoom/Focus Controls

VariZoom says it has designed advanced zoom/focus controls for videographers requiring precise, repeatable zoom capabilities with the PMW-EX3 or PMW-EX1 camcorders. Featuring a high-sensitivity rocker, these controls allow you to easily pull focus no matter what the situation. It's the perfect solution for shoots requiring stabilizers and jibs. Similar solutions for HDV camcorders are also available. (www.varizoom.com)

SONY

Sony Electronics Inc.
1 Sony Drive
Park Ridge, NJ 07656

 [click: sony.com/xdcamex](http://sony.com/xdcamex)
 [click: sony.com/hdv](http://sony.com/hdv)

©2009 Sony Electronics Inc. All rights reserved. Reproduction in whole or in part without written permission is prohibited. Features and specifications are subject to change without notice. Sony, XDCAM EX, Memory Stick, Memory Stick Duo, Memory Stick Pro and SxS PRO are trademarks of Sony. HDV and the HDV logo are trademarks of Sony Corporation and Victor Company of Japan, Limited. NIPROS is a registered trademark of Nippon Video System Co., Ltd.

Printed in USA 4/09
V-2449